

EG4[®] WINDOWS UPDATE GUIDE

EG4 WALLMOUNT 314Ah INDOOR & ALL WEATHER BATTERY

OVERVIEW

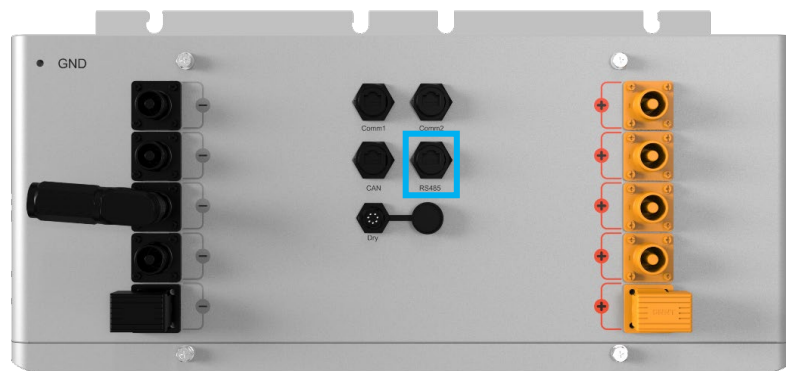
This document provides step-by-step instructions for updating the firmware of the EG4[®] Wallmount 314Ah Indoor and All Weather battery using the NuvoISP ISP Programming Tool. This guide covers setting the connection interface to UART, selecting the correct COM port, loading the appropriate BMS firmware file, and completing the programming process while ensuring the battery and computer remain powered until the update is fully finished and confirmed successful.

1. Plug the RS485 Cable Pins (1-B, 2-A) provided by EG4 Electronics into the RS485 communication port on the EG4 WallMount 314Ah Indoor or All Weather battery.

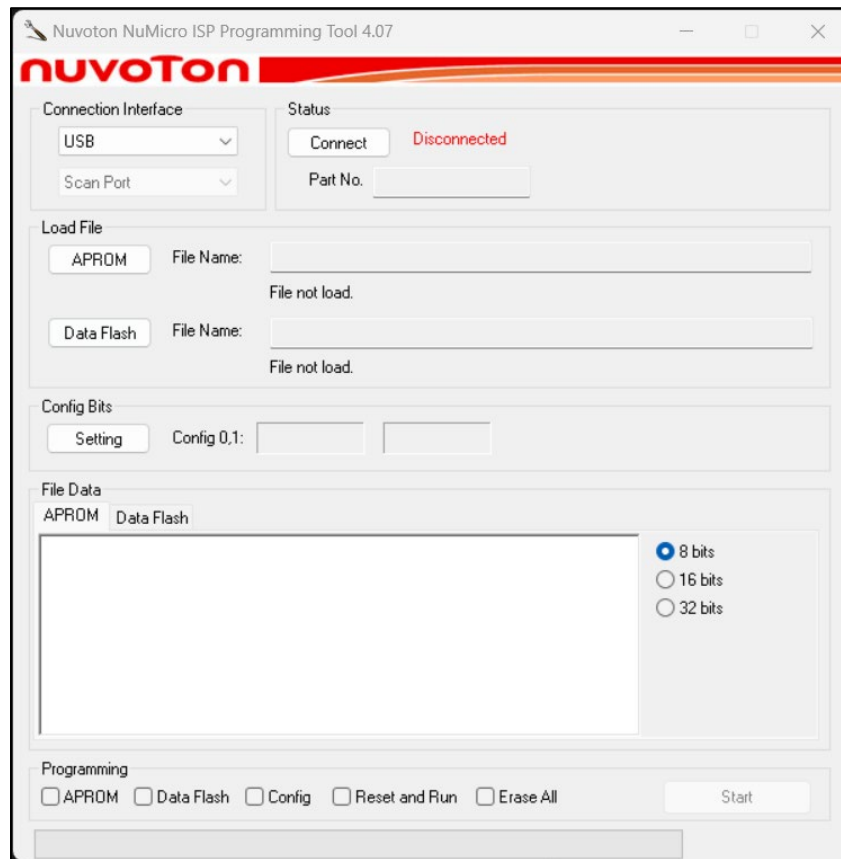
WallMount 314Ah
Indoor Battery



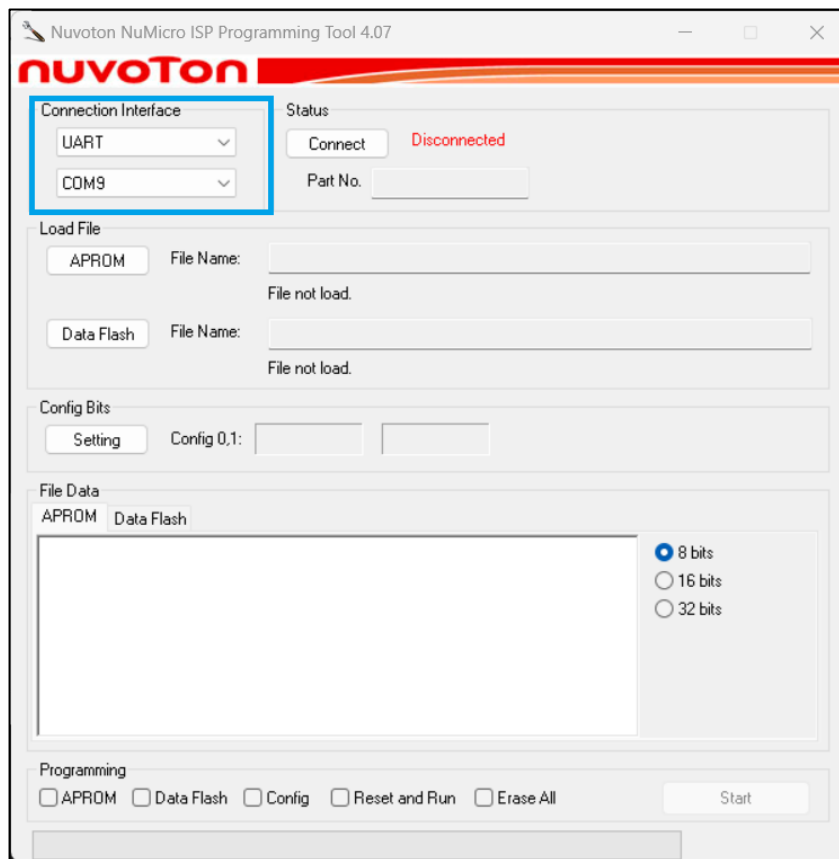
WallMount 314Ah
All Weather Battery



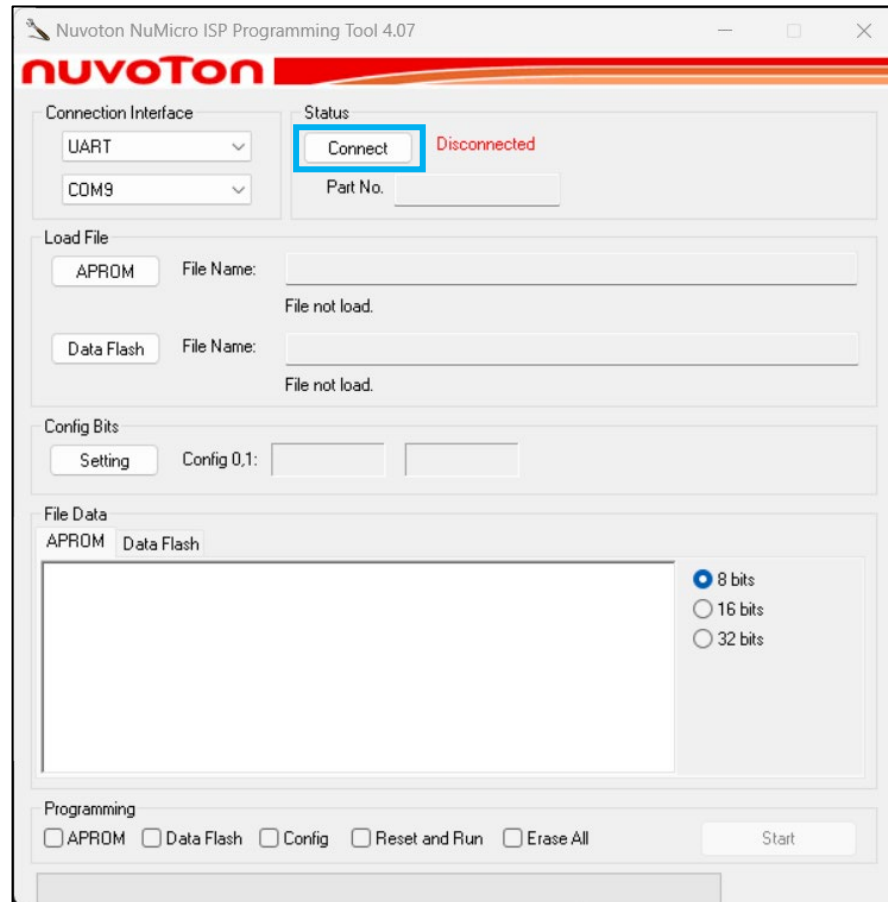
2. Open the “NuvoISP ISP Programming Tool”.



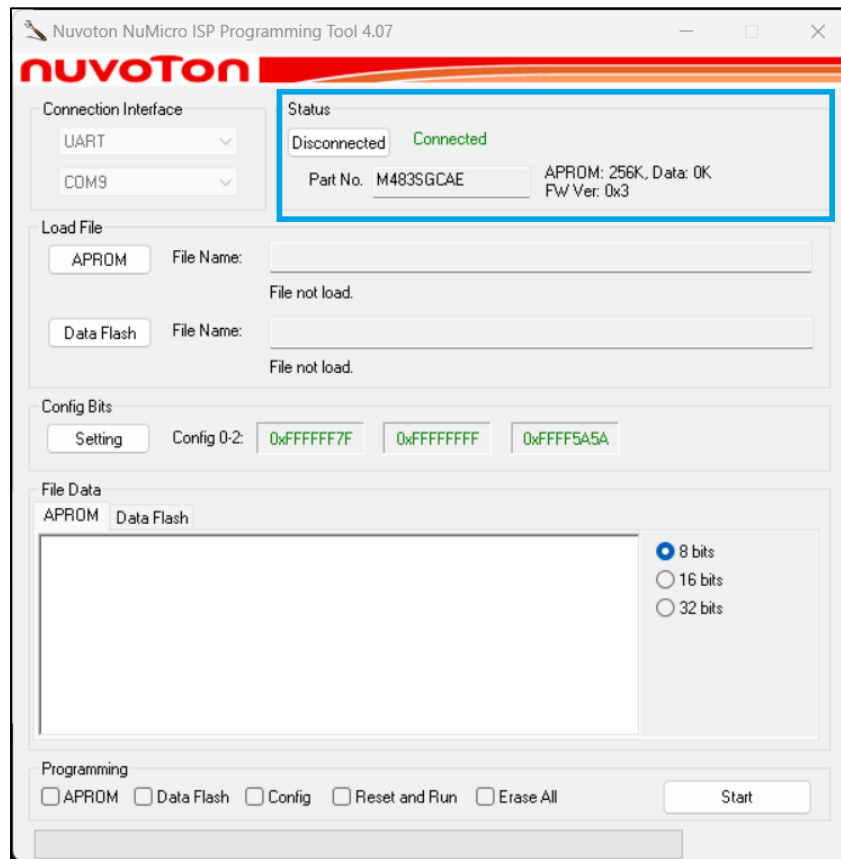
3. Change the “**Connection Interface**” to UART and to the COM port that the windows computer has populated, using the RS485 Update Cable.



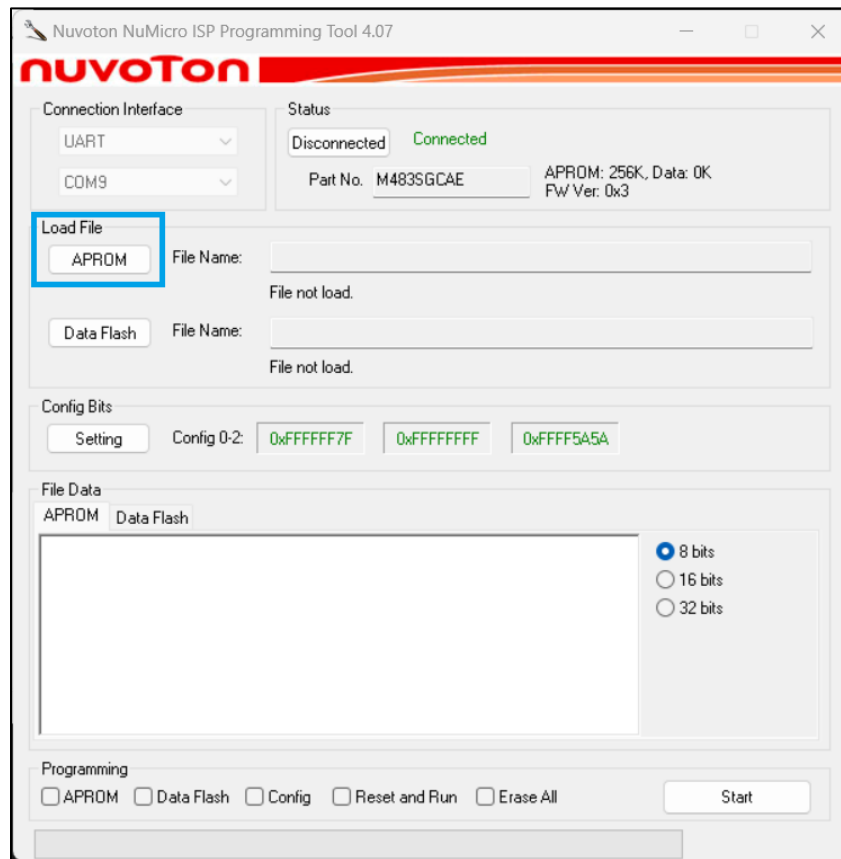
4. Now select “**Connect**”, then restart or power ON the battery.



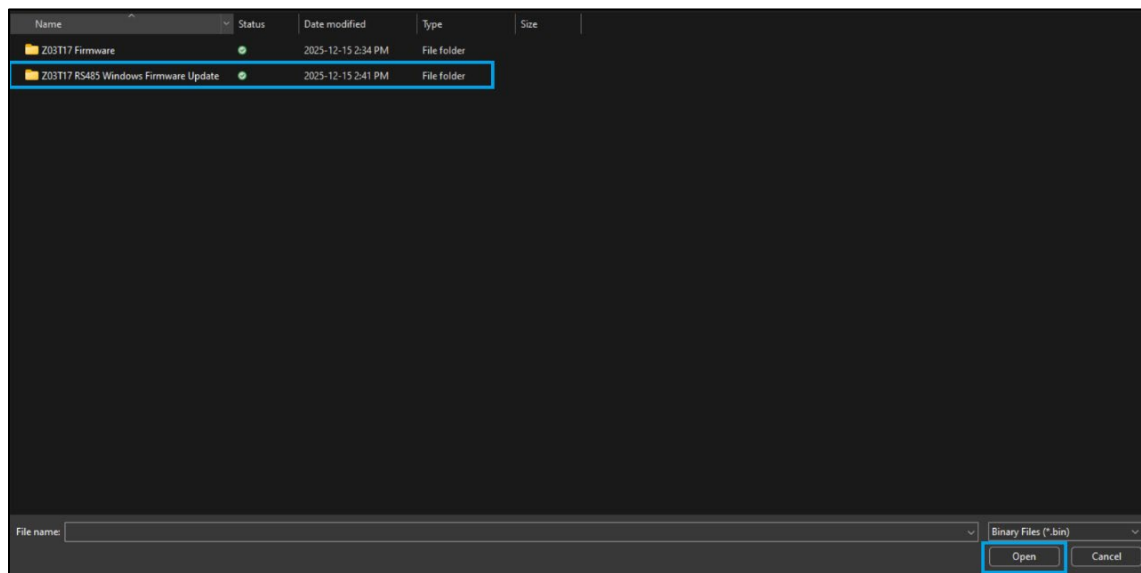
5. The Status will now change to Connected.



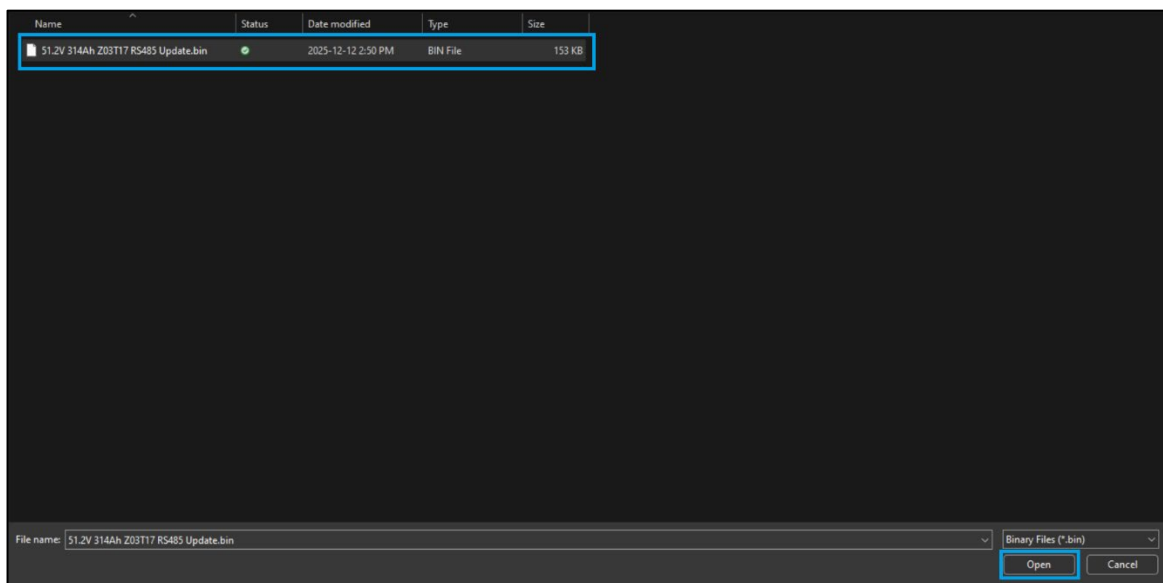
6. Select “**Load File APROM**”, this is where the firmware for the RS485 Windows firmware update will need to be loaded.



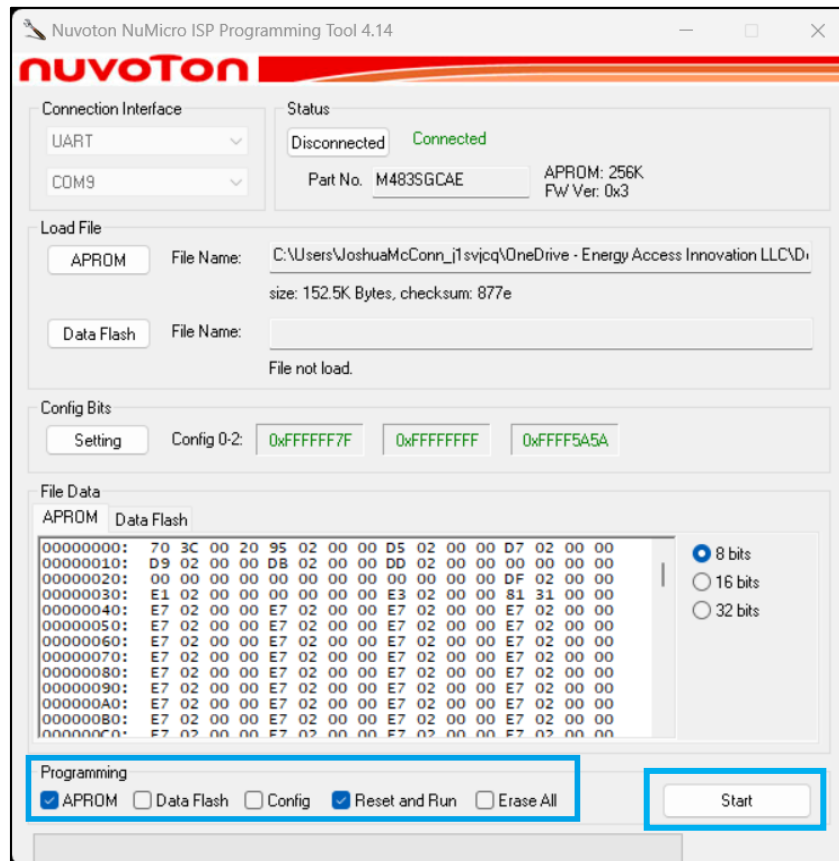
7. Navigate to the file directory that has been downloaded and open the “**Z03T17 RS485 Windows Firmware Update**” folder.



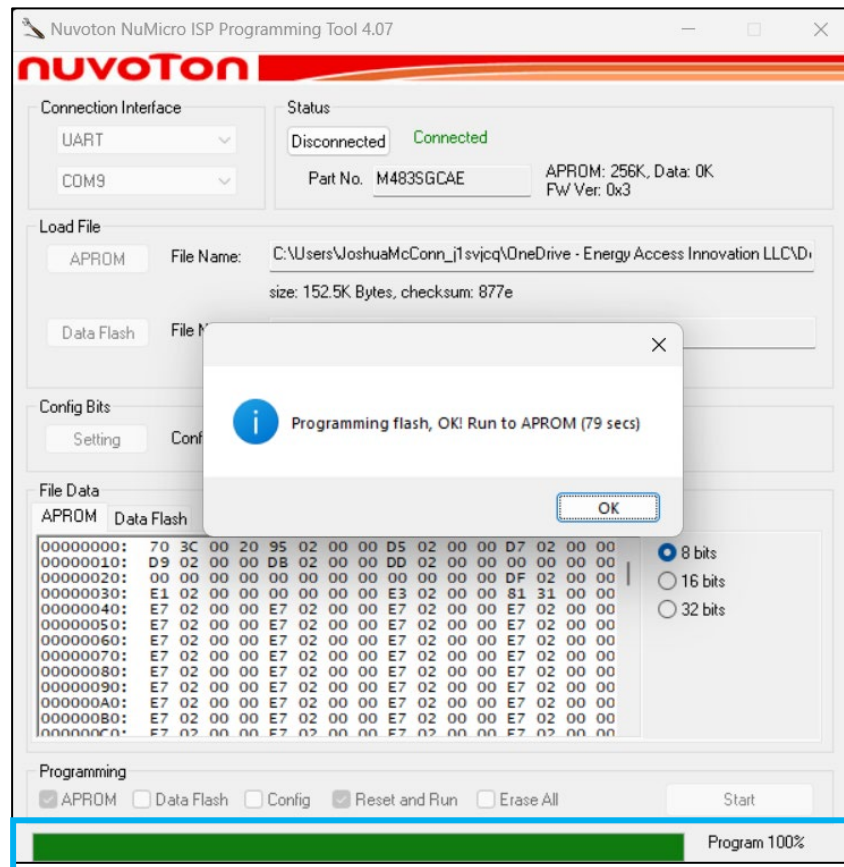
8. Select and open the “**51.2V 314Ah Z03T17 RS485 Update.bin**” BMS firmware file.



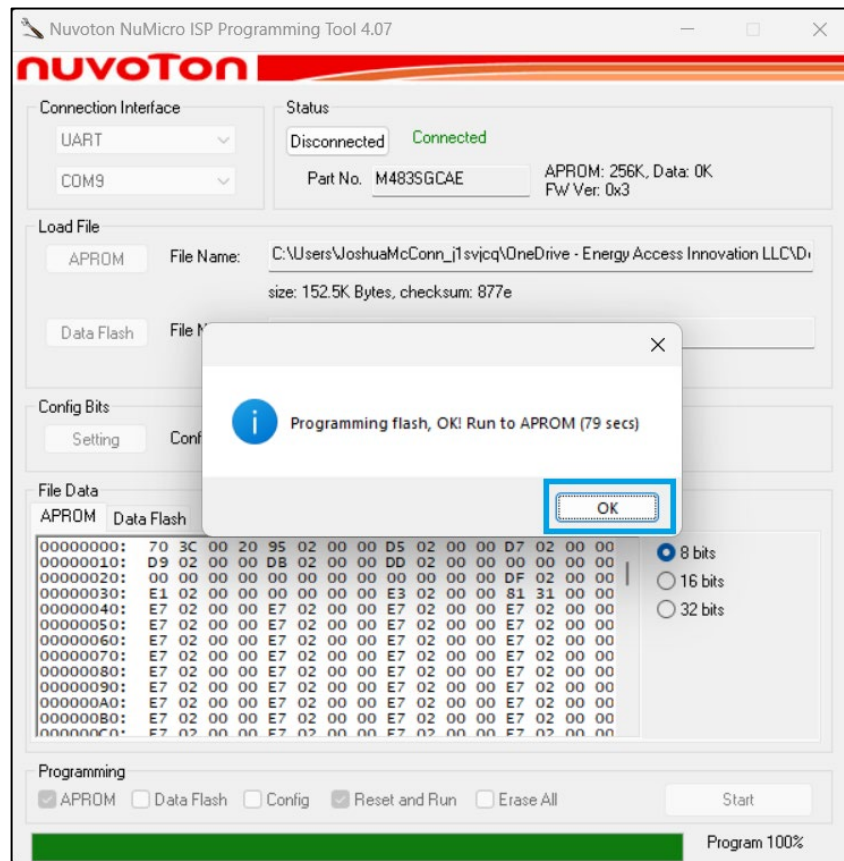
9. Under Programming, select “**APROM**” and “**Reset and Run**”, then click “**Start**”.



- The loading bar will begin to load at the bottom of the screen. **Do not** disconnect or restart the battery, laptop, or any other program until the update is 100% complete. This will take over 1 minute.



11. When finished, a **“Programming Flash, Ok! Run to APROM (Seconds)”** prompt will be displayed. This message confirms the battery has updated successfully. Select **“OK”**.



12. The battery will restart, flash the front LED indicators, and then return to the normal state. This confirms the update was successful and the end user can exit the program.



IMPORTANT:

If the update fails or is stopped preemptively due to a loss of laptop power, the RS485 cable becomes disconnected, or NuvoISP programming software closing. The battery will enter the "soft-bricked" mode. During the soft-bricked mode, only the RUN light will be SOLID green.

Reperform the entire firmware update again to un-brick the battery.

EG4

ELECTRONICS

support@eg4electronics.com
(903) 609-1988
www.eg4electronics.com